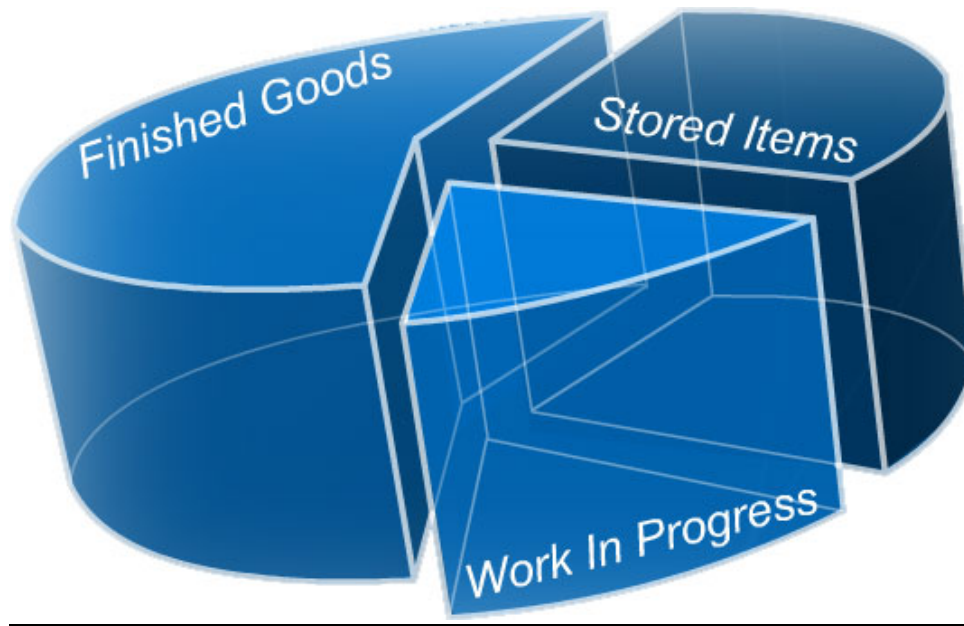




## WAREHOUSE INVENTORY MANAGEMENT SYSTEM



### **Product Guide**



## Warehouse Inventory Management Information System *Product Specification*

Warehouse inventory management information system is high performance software, which speeds up the business operations of the organization. Every organization, which deals with the raw materials, put its great effort in the efficient utilization of its raw material according to its need and requirement. The organization has to perform number of tasks and operation sin order to run its business in a manual system. For example:

- Estimation of new raw material required.
- Preparation of purchase order.
- Preparation of Inward gate pass/purchase invoice.
- Preparation of Outward gate pass /sale invoice.
- Preparation of Debit note.

By following these operation and tedious tasks, the management faces following problems:

- *Production delays due to raw-material non-availability*
- *Stuck-up of investments in raw-material inventories*
- *Ineffective control over raw material issuance and wastages.*

*Clicksoft Warehouse inventory System is cost-effective solution for managing raw material & inventory. Managing the inventory reduces the inventory carrying cost by Inventory procurement and assisting the management in just in time decision-making. Clicksoft Warehouse inventory System is ideal business solution for manufacturers and Producers who want to reduce their operational costs and become more competitive.*

All processes mentioned above were experienced during interaction with actual users involved in procurement and inventory management operations. This involves people ranging from Warehouses in-charge to business general managers and CEOs.

Warehouse System provides elegant, effective, and practical solution to automate the Procurement process and other up-stream supply chain operations. High **ROI** (return on Investment) is guaranteed in the form of optimized inventories.

Warehouse System Inventory provides a competitive edge to manufacturers by reducing the inventory Carrying cost and by avoiding production delays through timely availability of raw Materials. Also the cost of production goes down due to control in the raw material

### **Inventory Procurement Description**

Warehouse SYSTEM optimize the raw material inventories by adopting an intelligent inventory procurement process. Inventory procurement is completely automated.



Warehouse System manages the procurement of inventory on the basis of purchase orders. System performs the analysis of required inventory items for manufacturing orders, and generates the demand for a particular item to the particular vendor of each of the inventory items. It then generates the purchase orders for vendors (automated procurement process). The inventory is procured only when it's required, and thus the total stock available in the Warehouse is reduced and inventory-carrying cost goes down.

Management of large number of orders, starting in different calendar dates, involving different inventory items, become easy and effortless operation. Warehouse System not only informs the users about the current level of inventory available in the Warehouse, but also it gives the details about the utilization of inventory items for future manufacturing orders by generating demands.

*ClickSoft Warehouse System easily maps to the workflow of business environment. People can be Restricted to perform their assigned jobs. For example, purchase department will be able to issue purchase orders, Warehouse in-charge will be able to issue inventory items etc. However, it is possible to assign multiple roles to one person. Therefore, this System can be used by multiple users to do their assigned jobs, or System can be started in the manner that all tasks can be done by one user.*

## **System Key Features**

ClickSoft Warehouse Inventory System is concerned with raw material procurement (MRP) and management of suppliers and vendors..

Major functions of Warehouse Inventory SYSTEM include the following:

### **Inventory Optimization (JIT)**

- Auto generated Daily Demand
- Auto generated Daily Purchase Order (PO) of raw materials
- Avoid production delays

### **Inventory Procurement**

- Manage procurement schedule
- Keep minimum required inventory levels
- Purchase only when required for production – procurement automation

### **LC Plan**

- Raw material is estimated through intelligent formula calculation by considering production rate of an item



- It is highest form of demand.

### **Monitor and improve Vendor relations**

- Monitor supplier commitments
- Manage supplier payments

### **Gate Passes**

- Auto generated Inward gate pass according to purchase order
- Auto generated Outward gate pass for rejected item from the Ware house

### **GRN (Goods Receive Note)**

- Goods receive note for a particular supplier according to Inward gate pass.
- Warehouse issues stock on the average to the different department.

### **Debit Note**

- Debit note for a suppliers is automatically generated during the entry of the GRN and Line Return

### **Line Return**

- Rejected Items are returned to Ware house. Outward Gate Pass is issued
- Debit Note for Vendor is issued

### **Payments**

- Payments into/from Purchase Orders are recorded providing Purchase Orders Balances

### **Customizability and Flexibility**

- User defined attributes for inventory items
- Definition of inventory items, their vendors, vendor prices
- Definition of customers and their relevant information
- Definition of departments and their employees

### **Security Features**

- Configuration of user groups of users and their privileges for the System
- Logging of all actions of the users for future reference



### **Inventory Movement**

- Inventory receipts and returns from the vendors
- Inventory issues and returns to departments

### **System Security**

- System tracks all the actions Performed by the users
- Action log is maintained along with user reference and the time of action.

### **Inventory Re-Order Levels**

User can set three types of reorder Levels:

- Minimum
- Optimal
- Maximum.

### **Data recovery**

Data is quite important for organizations so efficient data recovery and back up procedures are embedded into the SYSTEM to enhance its security features.

## **How Does It Work**

The System performs following important tasks:

### **Setting Up the Environment**

In the initiation process of a SYSTEM, data is feed into the master files of

- Departments
- Users
- Vendors
- Customers
- Finished Goods
- Raw Inventory Items
- Prices
- Minimum Order Level

### **Auto Generated Demand Dept Wise**

Software generates demand for a particular raw material item according to the average quantity of raw material needed, if the quantity of a raw material item is less than to the MOL (minimum order level). The demand can be generated on the daily basis. This auto-generated demand has full detailed information about item as well as vendors.

The System generated demand can be customized manually

### **Auto Generated Purchase Order Dept Wise**



Purchase order for raw material is suggested by the System, automatically, according to future manufacturing orders (procurement automation). Minimum required inventory levels are maintained by the System. In this way, organizations get benefits like:

- Production delays are avoided through timely availability
- Over stocking is avoided by the System

### **Inward Gate Pass**

On receiving inventory items, inward gate pass is generated by software according to the purchase order.

### **Goods Receive Note**

This is the most important phase when the Warehouse receives the inventory items. The items are entered into stock and maintain the stock quantity by decrementing or incrementing stock. Here the SYSTEM performs two important steps

- *Software generates Debit Note to the concerning vendor for a rejected items*
- *Software generates Out Ward gate Pass for a rejected items*

So in this way organization can get following benefits

- System allows the user to reject the below standard items
- System allows the user to return defective inventory items

### **Inventory Issuance/Ware house Requisition**

After receiving items into the Warehouse the inventory materials are issued according to requisitions. In this way inventory shortage & available quantities information is available.

### **Monitor and Control**

The SYSTEM performs following monitoring tasks:

- Perform physical audits and match available quantities with required ones
- Check material wastage trends – Process wastage & Physical audit wastage
- Check planned material quantity & actual issued material quantity
- Check material availability against particular manufacturing order



### **Remote Site management**

This is quite important and demanding feature of the Warehouse System for the organization who has their departments at different locations. Warehouse System provides data portal utility, which import data and append it into the main database accordingly. Data is sent to the head office or main database through Email. Afterwards the data is inserted into the main DB with the help of efficient insertion algorithms. This feature is quite important for the organizations that don't have any Internet facility.

### **Analytical Power Of Warehouse System**

The Warehouse management information System is designed in very detailed manner with the help of great effort of our R&D(Research and development) department. It provides a number of precise reports and summaries both for middle level and high-level management.

The categorized reports are as follows:

- Demand
- Purchase Order Number
- **GATE PASSES**
  - 1.Inwards Passes
  - 2.Outwards Passes
- **Stock Receipts**
  - 1.Material receipt inspection note
  - 2.Daybook
  - 3.Summary
    - Item wise
    - Category wise
    - Monthly history
      - 1.Item wise
        - Quantity
        - Amount
      - 2.Category Wise
- **Stock Issues**
  1. Material issue requisition
  - 2.Daybook
  - 3.Warehouse requisition item Wise
  - 4.Warehouse requisition category Wise
  - 5.Summary
    - Warehouse requisition summary-Category Wise
    - Warehouse requisition summary-Cost center Wise
    - Summary-Cost center wise/dept Wise (blank report)
    - Category Wise



- Monthly history
  - 1.Item Wise
    - Quantity
    - Amount
  - 2.Category Wise
  - 3.Dept/category Wise
- **Line Rejection**
- **Parties**
  - 1.Reciepts daybook
  - 2.Debit notes
  - 3.Stock summary
  - 4.Rejection/Return
- **Stock**
  - 1.Ledger
  - 2.Minimum Order Level
  - 3.Balances
    - Code Wise
    - Alphabetically
  - 4.Summaries.
    - Quantities
    - Detail

### **Monthly LC Plan**

- Lists
  - 1.Units
  - 2.Categories
  - 3.Departments
  - 4.Cost centers
  - 5.Items
    - Code Wise Alphabetically
    - Detailed
    - Minimum Order Level
  - 6.Parties
    - Code Wise
    - Alphabetically
    - Detailed

***For further information contact:***

ClickSoft (Pvt) Ltd  
55/5 Shadman

**ClickSoft (Pvt) Ltd - Software Developers and Solution Providers**

55 Shadman Market, Lahore Ph: 7556296-7 Fax: 7568450 Cell: 0321-9497866 Email: [info@clicksoft.biz](mailto:info@clicksoft.biz) URL: [www.clicksoft.biz](http://www.clicksoft.biz)



ClickSoft



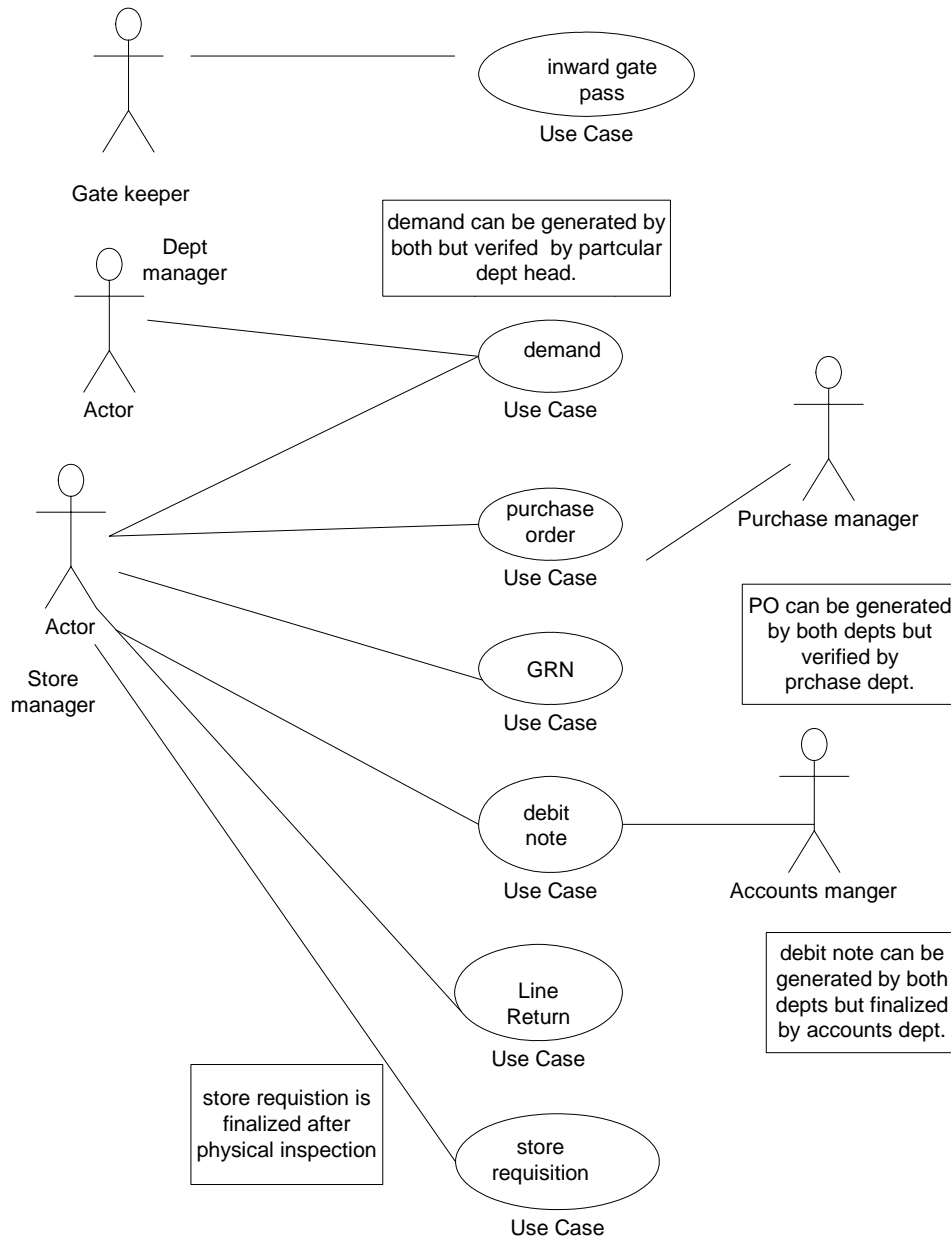
Lahore

Phone: 042-7556296-7, 0321-9497866

[www.clicksoft.com.pk](http://www.clicksoft.com.pk)

[info@clicksoft.com.pk](mailto:info@clicksoft.com.pk)

## *Workflow Diagram Of Ware house Inventory System*



**Scenarios of Ware house Management Information System**

